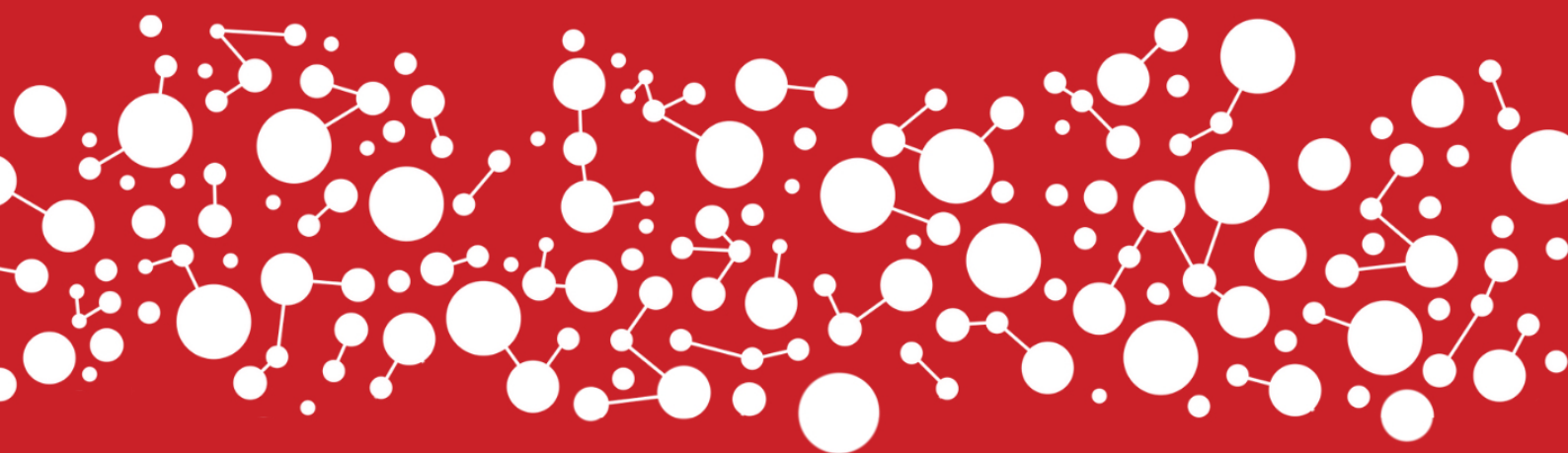


Toolbox - Linking Humanitarian CVA and Social Protection

Introduction & how to use



Objective

There is increasing interest in linking social protection and humanitarian cash and voucher assistance (CVA), and the need for concise, practical guidance on the approaches and how to do this. While there is an increasing range of tools and guidance available, it can be challenging locating, navigating and selecting the appropriate materials. This toolbox aims to help address this problem by curating existing tools for practitioners on key operational topics relating to linking humanitarian cash assistance and social protection.

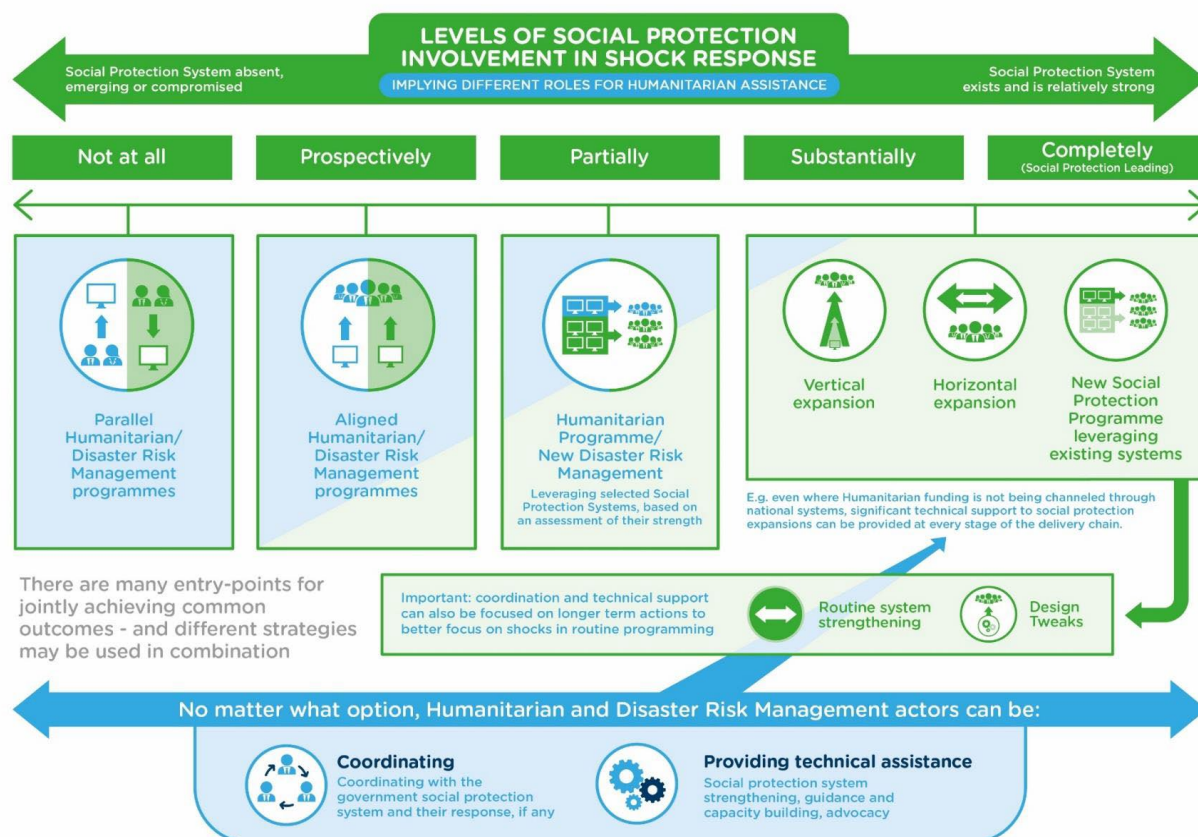
Intended audience

The toolbox is intended primarily for humanitarian actors (UN, I/NGOs, Red Cross Red Crescent, and donor technical teams) seeking to link humanitarian CVA with social protection systems (linking CVA-SP). However, the toolbox should also be useful for social protection actors (in and outside government) operating in contexts with clear entry points for linking humanitarian action and social protection (for example, contexts of fragility/protracted crisis, where social protection systems are still emerging/coverage expanding, and where gaps are being filled by the international humanitarian system).

Humanitarian actors are increasingly filling a role in providing technical support and system strengthening for national governments, to support national SP system building and shock responsive social protection (SRSP). Meanwhile experience is showing that linking CVA-SP activities are most effective when designed in a way that takes account of and complements national government's own SRSP efforts or to anticipate transition to government ownership in the longer term. SRSP and linking CVA-SP, while distinct area of programming, are thus closely related. They make use of some of the same systems and processes (early warning data and information; social protection data and information; delivery systems) and SRSP and CVA-SP programmes need to be designed in a harmonised, coordinated, consistent and complementary way. Therefore, the toolbox will also collate any tools found that were developed for Adaptive Social Protection or SRSP audiences, since these will be highly relevant.

It is fundamental to stress these options may combine in many different ways depending on country context (Smith, 2021). For example, the context may require a fully parallel approach to funding and payments, whereas it makes sense to align the set of eligibility criteria and transfer values and piggyback on SP data, information systems and capacity (see Seyfert et al, 2019 and Longhurst et al, 2020). The figure below illustrates the different roles that humanitarians may be able to play according to the sophistication of the social protection system and a range of entry points along a 'continuum of integration'. What approach is the best to take also depends on time frame and available funding as well as what coordination mechanisms exist.

Figure 1. Options for linking humanitarian assistance and social protection along a 'continuum of integration'



(From Smith, G. (2021) 'Deciding When and How to Link Humanitarian Assistance and Social Protection: Guidance and Tools for Response Analysis', Social Protection Approaches to COVID-19 Expert Advice Service (SPACE), DAI Global UK Ltd, United Kingdom <https://www.calpnetwork.org/publication/space-deciding-when-and-how-to-link-humanitarian-assistance-and-social-protection-guidance-and-tools-for-response-analysis/>)

Type of resource included

The toolbox brings together:

- Feasibility assessment and options analysis** technical guidance or tools for assessing feasibility of and options for linking.
- Guidance for programme design** practical guidance or tools for designing CVA programmes, or operational processes, linked to social protection.
- Country-specific resources and templates** real life procedures from specific countries/responses that can serve as a working example or template for others to follow (e.g. TORs for coordination groups; SOPs for triggering a response through social protection; MOUs setting out roles and responsibilities for humanitarian and social protection actors in shock response, etc.)
- Training or topic primer** any resources introducing the subject area, such as introductory or overview videos, training for newcomers to SP, etc.

Some resources fall into more than one category. Note that the categories have also been duplicated into separate worksheets within the Excel spreadsheet for ease of use.

Information provided about each resource

For each resource, the spreadsheet provides the following information.

- **Source** – which organisation produced this resource
- **Title** – name of resource
- **Year** – year of production
- **Location** – by country or region or global
- **Category of Resource** - Feasibility assessment & options analysis/ Guidance for Programme Design / Country specific resources and templates/ Training or topic primer
- **Covering ‘building blocks’**

1. Stakeholders & institutions	2. Data & info systems	3. Programme design	4. Delivery systems	5. Finance
---	------------------------------	---------------------------	---------------------------	---------------

- **Description** – a brief description of the objective of the resource
- **Contexts** – to what sort of emergency context this resource would apply
- **Specific to cash assistance** – or if applicable for other modalities
- **Language** – English, French, Spanish or
- **URL or file name** – the link to the document

Building blocks

The ‘building blocks’ above come from the commonly conceptualised ‘building blocks’ of national social protection and disaster management systems with which stakeholders working on linking HA-SP, or SRSP must engage. This toolbox has adopted the same structure and approach for cataloguing the tools identified. This approach is in line with a range of influential recent technical guidance such as World Bank’s guidance on Adaptive Social Protection; the EU’s Social Protection Across the Nexus Reference Document; and the SPACE Guidance on Linking SP-HA.

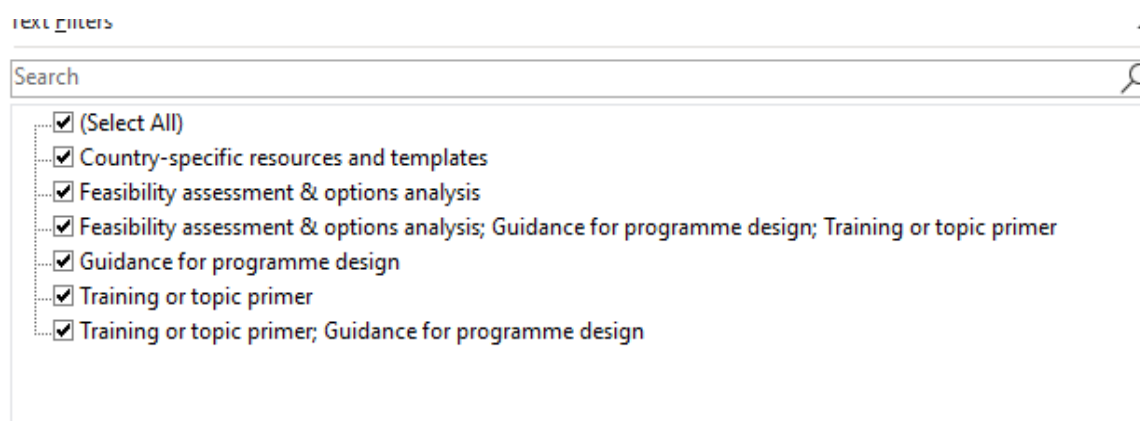
Building block	Components
1. Stakeholders and institutions	i. Policy and regulatory frameworks ii. Governance and coordination iii. Institutional capacities
2. Data and information systems	i. Social protection data and information systems (including beneficiary registries; social registries; data protection) ii. Other civil registries iii. Data on disaster/shock vulnerability (including disaster vulnerability mapping, early warning systems and trigger indicators for early action)
3. Cash transfer programme design	i. Targeting design (coverage; criteria; methodology) ii. Modality design (including restrictions and conditions) iii. Transfer design (value, frequency, duration, exit)
4. Delivery systems	i. Registration ii. Enrolment iii. Payment delivery

	iv. Communication, complaints and feedback and accountability v. M&E
5. Financing	i. Guidance on government financing and SP ii. Disaster risk financing

How to use the spreadsheet?

The filter buttons that appear in the bottom right corner at the top of each column may be used to search the spreadsheet for particular information:

1. Select the Data tab, then click the Filter command. A drop-down arrow will appear in the header cell for each column. ...
2. Click the drop-down arrow for the column you want to filter. ...
3. The Filter menu will appear. ...
4. The worksheet will be filtered according to your search term.



Adding Resources or Sharing Feedback

Please share any resources that fit the categories above, CaLP will be adding to the toolbox regularly.

Kindly send your resources to the emails below:

Julie Lawson-McDowall at Julie.Lawson-McDowall@calpnetwork.org

Ruth McCormack at Ruth.McCormack@calpnetwork.org

Acknowledgements

CALP Network is grateful to the German Federal Foreign Office for funding this work and to the representatives of the Grand Bargain Sub Group on Social Protection and the Social Protection in Crisis Contexts community of Social Protection.Org who participated in the steering committee for this work.

CALP would particularly like to thank the very many practitioners who have contributed resources to this toolbox.

The toolbox was developed by Gaby Smith, Independent Consultant.